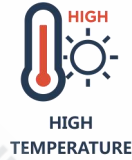


SPL-FTTH

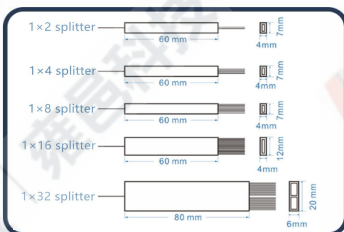
SPL-M01 Splitter Planar Lightwave



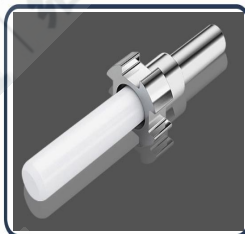
Model No.	SPL-M01
Type	1x2/x4/x8/x16/x32/64
Operating Wavelength	1260 ~ 1650(nm)
Return Loss(dB)	UPC≥50 APC≥55
Connector	SC/FC/LC Optional
Pigtail Length (m)	1.0(±0.1) or Customer Specified
Fiber	G657A or customized
Tail jacket color	Blue ,black or customized
Operating temperature	-40-85°C
Humidity	≤ 95%
Atmospheric Pressure	70-106Kpa



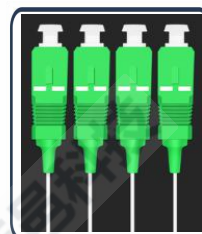
High-quality chips



Standard dimensions



Ceramic ferrule



Ceramic ferrule connector



High-quality fiber core, stable transmission

SHENZHEN U1
TELECOMMUNICATIONS CO.,LTD

6th Floor, Building 1,
Changxing Hi-tech Industrial Park,
Shajing Street, Baoan District,
Shenzhen China 518104

CALL: +86 0755 - 2667 3886

Tel:+86 0755-2667 3886
Fax:+86 0755-2682 1069
Web: www.u1conec.com
E-mail: admin@u1conec.com