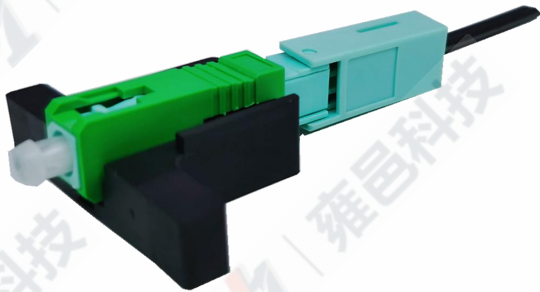
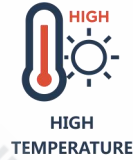
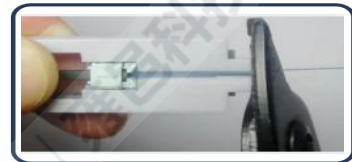


FIC-FTTH

FIC-21 Field Installation Connector



Model No.	FIC-21
Insertion loss	≤0.30dB Max 0.5dB
Return loss	APC≥55dB UPC≥50dB
Tensile	ΔIL < 0.3dB @ 40N
Durability	> 500 times
Re-assembly	> 5 times
Cable scope	2.0mmX3.0mm Drop Cable
Humidity	≤ 95%
Operating temperature	-25-85°C
Atmospheric Pressure	70-106Kpa



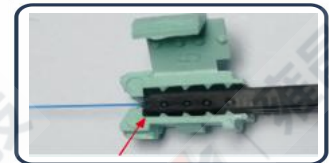
High fixed-length accuracy



High quality ceramic ferrule



Butterfly clasp design



Snap-type design ensures sufficient tension

SHENZHEN U1
TELECOMMUNICATIONS CO.,LTD

6th Floor, Building 1,
Changxing Hi-tech Industrial Park,
Shajing Street, Baoan District,
Shenzhen China 518104

CALL: +86 0755 - 2667 3886

Tel:+86 0755-2667 3886
Fax:+86 0755-2682 1069
Web: www.u1conec.com
E-mail: admin@u1conec.com