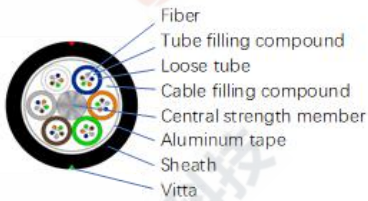


CABLE-FTTH

GYTA Optical Fiber Cable



DUST-PROOF

RoHS COMPLIANT
RoHS

WATER-PROOF

WORKING AT HEIGHTS

HIGH TEMPERATURE

WALL-HUNG TYPE

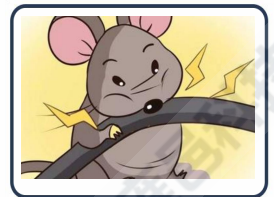
Model NO.	GYTA
Fiber type	G652
Sheath color	Black
Sheath material	PE
Cable dimension (mm)	9.5-13.5, Tolerance±0.1
Cable weight (Kg/km)	90-228
Min. bending radius (mm)	30 (Static) 15(Dynamic)
Attenuation (dB/km)	≤ 0.4 at 1310nm ≤ 0.3 at 1550nm



- 1 Single steel wire as central strength member
- 2 Specially designed compact structure is good at preventing loose tubes from shrinking .



- 1 Duct and Aerial, Direct Buried.
- 2 Small cable diameter, light cable weight, easily to lay



- 1 Steel tape armored, excellent anti-crush properties.
- 2 Good anti-bullet properties.

SHENZHEN U1
TELECOMMUNICATIONS CO.,LTD

6th Floor, Building 1,
Changxing Hi-tech Industrial Park,
Shajing Street, Baoan District,
Shenzhen China 518104

CALL: +86 0755 - 2667 3886

Tel:+86 0755-2667 3886
Fax:+86 0755-2682 1069
Web: www.u1conec.com
E-mail: admin@u1conec.com