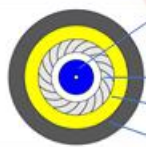
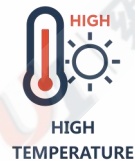


# CABLE-FTTH

GJSFJV Optical Fiber Cable



Colored fiber or tight buffer fiber  
Spiral steel pipe  
Reinforcer  
Outer sheath



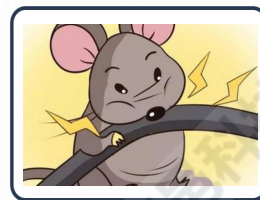
Model NO.	GJSFJV
Fiber type	9/125, 50/125,62.6/125
Sheath color	Black or Customized
Sheath material	LSZH/PVC/PE/TPU
Cable dimension (mm)	2.0-3.0, Tolerance±0.1
Cable weight (Kg/km)	11-15
Min. bending radius (mm)	20 (Static) 15(Dynamic)
Attenuation (dB/km)	≤ 0.4 at 1310nm ≤ 0.3 at 1550nm



- 1 A layer of stainless steel wire enhance the crush resistance of the cable and anti-rodent .
- 2 High strength aramid yarn, high performance outer sheath



- 1 Suitable for all kinds of connectors.
- 2 Can make patchcord and pigtail.



- 1 Anti-rat bite.

**SHENZHEN U1**  
TELECOMMUNICATIONS CO.,LTD

6th Floor, Building 1,  
Changxing Hi-tech Industrial Park,  
Shajing Street, Baoan District,  
Shenzhen China 518104

**CALL: +86 0755 - 2667 3886**

Tel:+86 0755-2667 3886  
Fax:+86 0755-2682 1069  
Web: www.u1conec.com  
E-mail: admin@u1conec.com