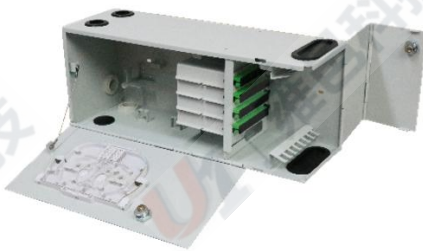


FAT-FTTH

FAT-BM02-32 Splitter Fiber Access
T e r m i n a l



Model No.	FAT-BM02-32
Dimension(H x W x D)	175x442x142mm
Subscribers	4pcs 1×8 PLC Splitter
Max Capacity Of Splicing	12
Max Number of Trays	1
Bending Radius	≥30mm



- 1 Steel material
- 2 Strong and beautiful
- 3 Can be used repeatedly



- 1 Input and output holes can be compatible with optical cables of different sizes



- 1 Integrated with cable splicing and management rods

SHENZHEN U1
TELECOMMUNICATIONS CO.,LTD

6th Floor, Building 1,
Changxing Hi-tech Industrial Park,
Shajing Street, Baoan District,
Shenzhen China 518104

CALL: +86 0755 - 2667 3886

Tel:+86 0755-2667 3886
Fax:+86 0755-2682 1069
Web: www.u1conec.com
E-mail: admin@u1conec.com