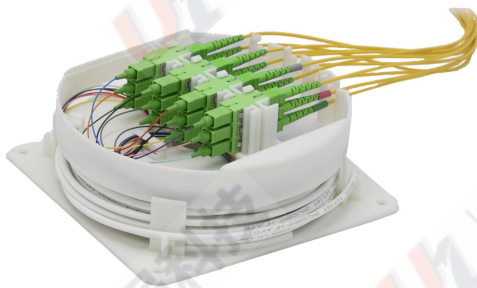
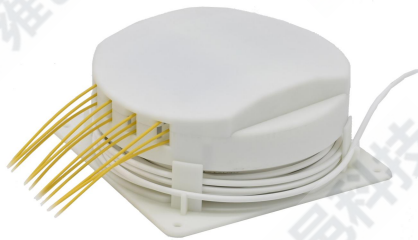


FAT-FTTH

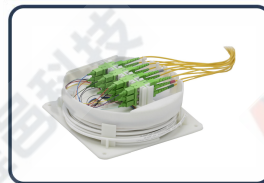
FAT-BP01-12 Terminal de acceso de fibra terminado



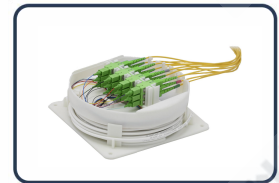
| | |
|------------------------|---------------------|
| N ° de Modelo. | FAT-BP01-12 |
| Dimensión (H x W x D) | 290x260x95mm |
| Suscriptores | 12pcs SC/APC,SC/UPC |
| Diámetro del puerto | Φ4.0mm |
| Radio de curvatura | ≥30mm |



1 Material de acero
2 Fuerte y hermosa
3 Puede usarse repetidamente



1 Se puede almacenar a 30 m de fibra de 4,0 mm.



1 Maneje una condición de radio de fibra razonable.

SHENZHEN U1
TELECOMMUNICATIONS CO.,LTD

6th Floor, Building 1,
Changxing Hi-tech Industrial Park,
Shajing Street, Baoan District,
Shenzhen China 518104

CALL: +86 0755 - 2667 3886

Tel:+86 0755-2667 3886
Fax:+86 0755-2682 1069
Web: www.u1conec.com
E-mail: admin@u1conec.com